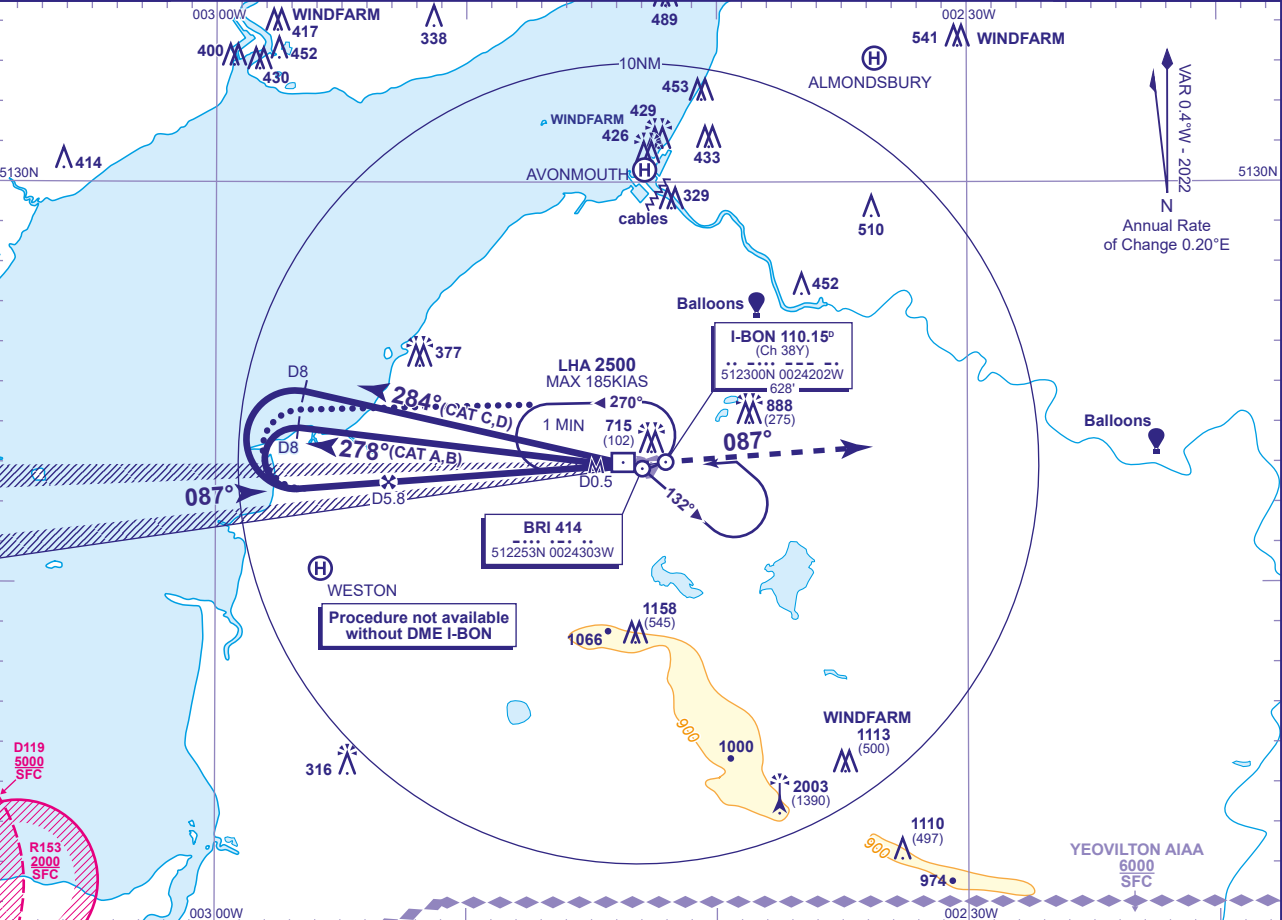


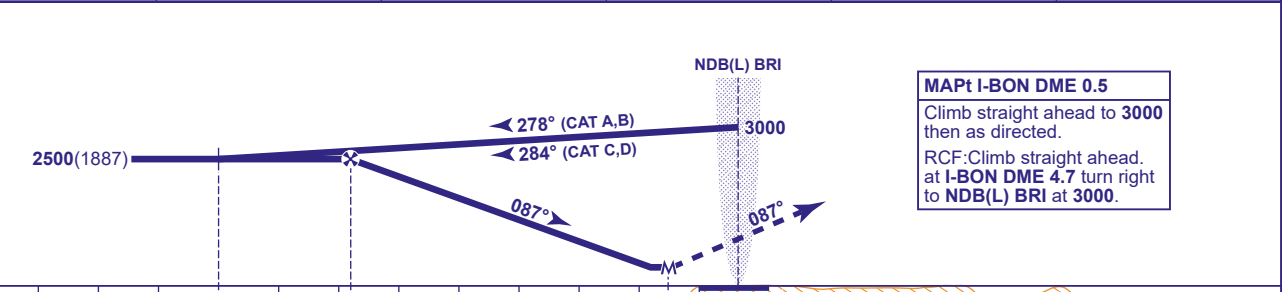
INSTRUMENT APPROACH CHART - ICAO

BRISTOL
LOC/DME/NDB(L)
RWY 09
(ACFT CAT A,B,C,D)

<div><div><div>30°08'</div><div>22°</div><div>090°</div><div>270°</div><div>30°</div><div>30°</div></div><div>MSA 25NM NDB(L) BRI</div></div>	TWR 133.850, 136.080*	BRISTOL TOWER	AD ELEVATION 622	TRANSITION ALTITUDE 6000
	APP 125.650, 136.080*	BRISTOL RADAR	THR ELEVATION 613	
	RAD 136.080*	BRISTOL DIRECTOR	OBSTACLE ELEVATION 2003 AMSL (1390) (ABOVE THR)	
	ATIS 126.030	BRISTOL INFORMATION	BEARINGS ARE MAGNETIC	
	*See AD 2.18 for details.			



RECOMMENDED PROFILE Gradient 5.2%, 320FT/NM					
DME I-BON	5	4	3	2	1
ALT(HGT)	2260(1647)	1940(1327)	1620(1007)	1310(697)	990(377)



		D8	D5.8			D0.5 0	DME I-BON zero ranged to THR RWY 09					
Aircraft Category		A	B	C	D	Rate of descent	G/S KT	160	140	120	100	80
OCA (OCH)	Procedure	900(287)	900(287)	900(287)	900(287)		FT/MIN	850	740	640	530	420
VM(C)OCA (OCH AAL)	Total Area	1050(428)	1190(568)	1460(838)	1560(938)							
	North of RWY 09/27	1050(428)	1190(568)	1290(668)	1320(698)							

ALTERNATIVE PROCEDURE EXTENDED HOLDING PATTERN
Overhead NDB(L) BRI at 3000 in holding pattern, turn left and descend on the extended outbound leg to 2500. At I-BON DME 8 turn left to intercept LOC inbound. Then continue as for basic procedure.

- NOTES**
- 1 Lowest altitude to commence procedure from hold is 2500.
 - 2 Maximum KIAS for procedure is 110KIAS (CAT A); 140KIAS (CAT B); 185KIAS (CAT C,D).